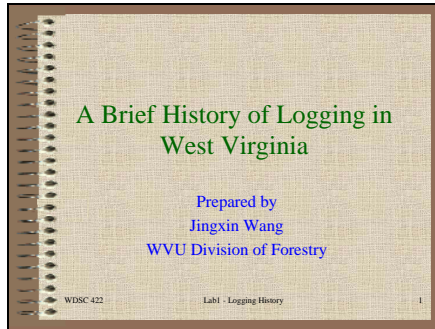
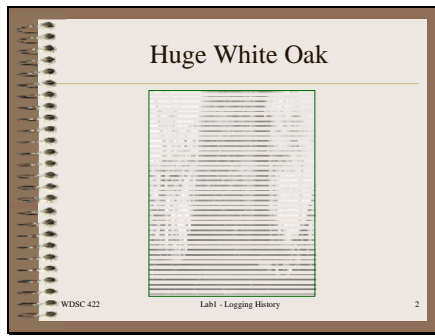


Slide 1



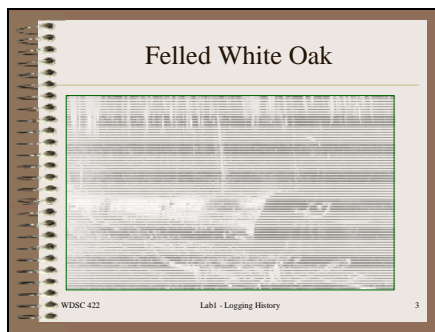
Source: Clarkson, R.B. 1964.
Tumult on the Mountains:
Lumbering in West Virginia – 1770-
1920. McClain Printing Company,
Parsons, West Virginia. 410 pp.

Slide 2



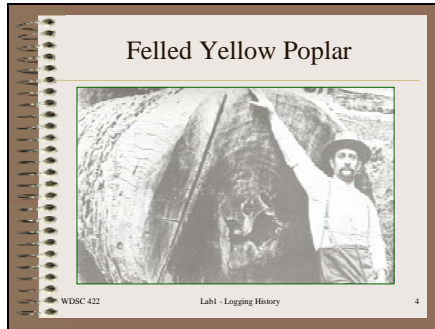
Huge white oak in Nicholas county,
1914.

Slide 3



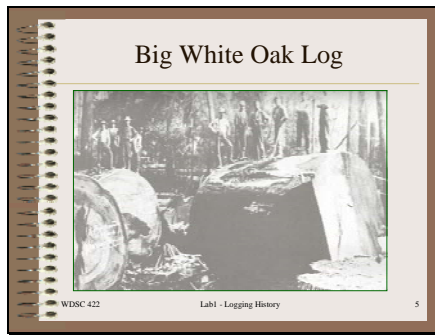
A felled White Oak in Nicholas
County in 1914.

Slide 4



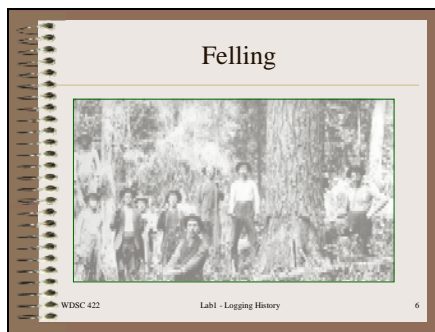
A felled yellow poplar in Webster county in 1910.

Slide 5



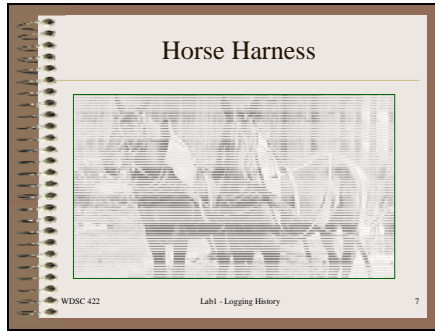
This white oak was probably the largest tree cut by lumbermen in West Virginia. The log on the left is marked "13 ft. diameter, 16 ft from the base". The next log is marked "10 ft. diameter, 31 ft. from the base."

Slide 6



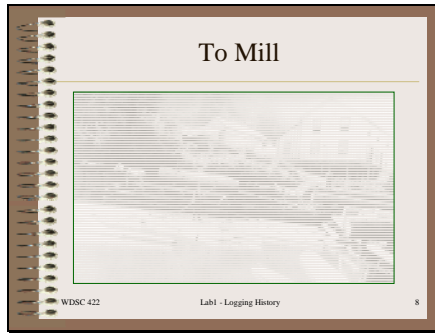
Felling a large hemlock on Williams River, Pocahontas county in 1902.

Slide 7



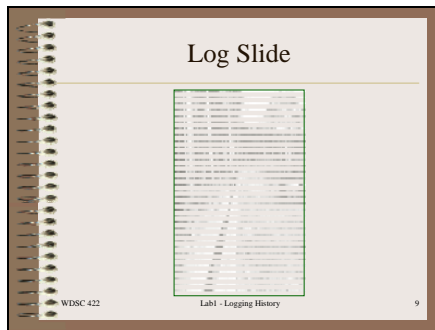
Leather housing on harness kept shoulders and collar dry in wet weather, in Tucker county in 1910.

Slide 8



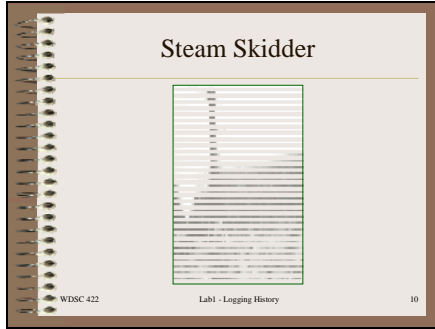
Bringing logs to the mill pond by horse-operated tram road.

Slide 9



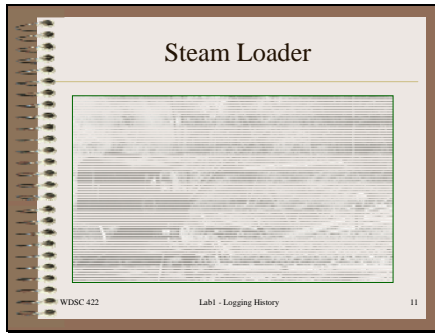
Log slide in the spruce woods of Tucker county in 1896.

Slide 10



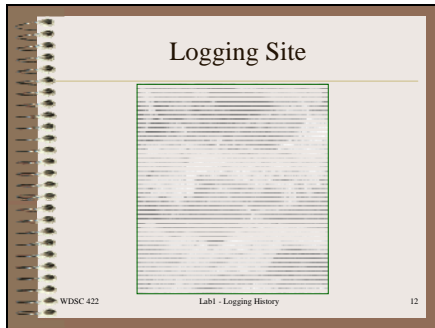
First steam skidder on Red Creek,
Tucker county in 1910

Slide 11



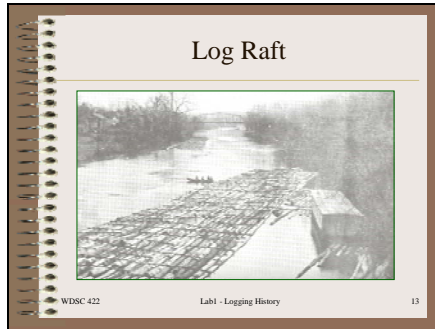
Loading logs in Clay county in
1958.

Slide 12



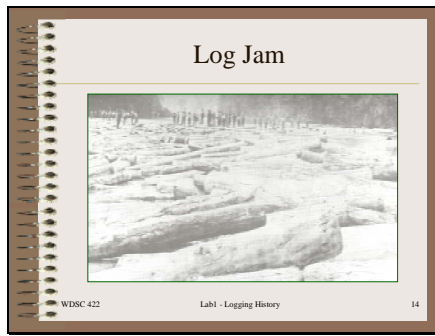
Aerial view of a logging site left by
steam skidders near Cass,
Pocahontas County, WV.

Slide 13



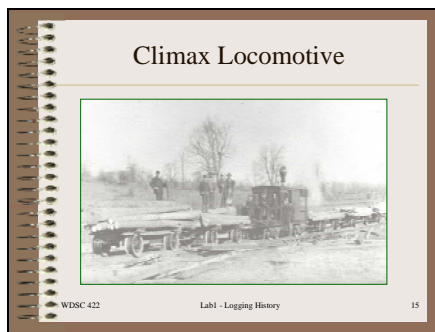
Log rafts on the Guyandotte River at Huntington, Cabell County, WV.

Slide 14



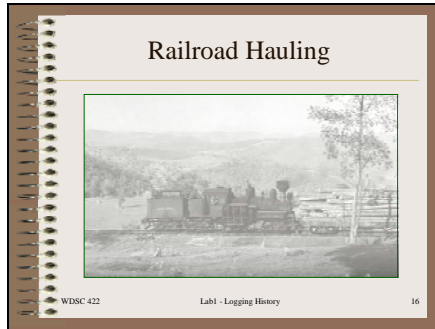
Log jam on the Greenbrier River in 1895.

Slide 15



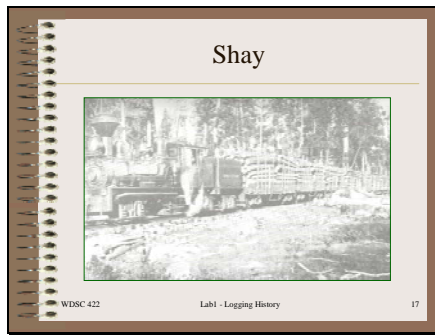
The “Swamp Angel”, a 13 ton upright-boiler Climax locomotive built in 1891. This engine owned by Sylvester Rinard was used to log the Cranesville Swamp area of Preston County near Hopemont, Preston County in 1893.

Slide 16



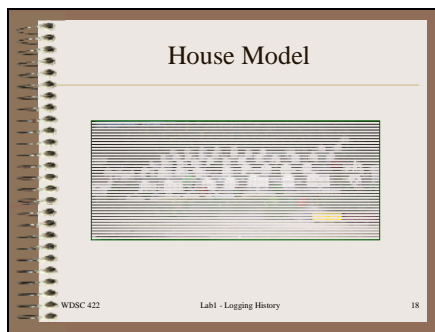
In Cass, Pocahontas county in 1960.

Slide 17



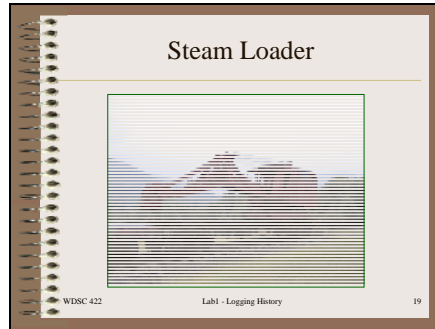
Shay No.3 of the West Virginia Pulp and Paper Co. on Cheat Mountain near Spruce, Pocahontas County.

Slide 18



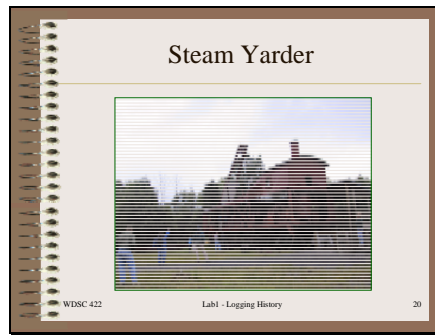
Used to be lived by loggers in Cass.

Slide 19



You can see this steam loader in Cass.

Slide 20



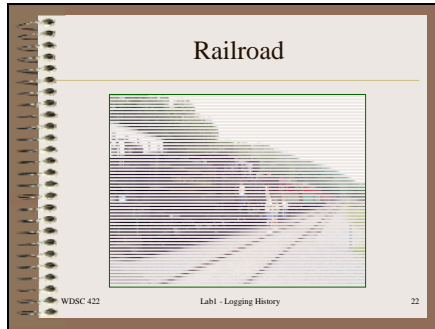
This was an old steam skidder in Cass, we may call it steam yarder.

Slide 21



That is a tower used for the steam skidder.

Slide 22



The railroad was used for timber transportation. It was recovered and is used as a scenic railroad in Cass.

Slide 23



Black oak felled in Cheat Lake area in Morgantown, WV in 2001.
135 years old
5 ft. in butt diameter
1500 bdf.

Slide 24

